

\$375,000 - 11319 110 Avenue, Edmonton

MLS® #E4431260

\$375,000

2 Bedroom, 2.00 Bathroom, 940 sqft

Single Family on 0.00 Acres

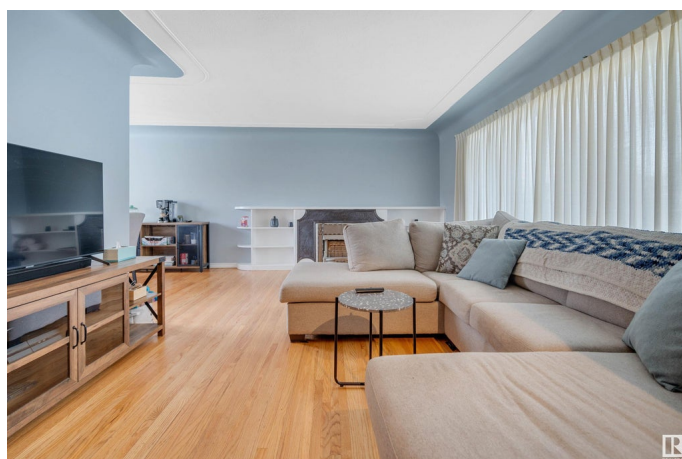
Queen Mary Park, Edmonton, AB

CLASSIC STYLE in Queen Mary Park!
TRANQUIL TONES and VIBRANT
HARDWOOD outline the COVED CEILINGS
through the Living Room, past the ACCENT
FIREPLACE, seamlessly flowing into the
FORMAL DINING SPACE with CHANDELIER.
The BRIGHT VINTAGE kitchen overlooks an
EXPANSIVE YARD with FRUIT TREES,
GREENHOUSE, and SINGLE-CAR GARAGE.
An ENORMOUS 55x144 space encompasses
this CHARMING 2-bedroom, 2-bathroom
BUNGALOW. The BACK ENTRANCE to the
basement uncovers the beginnings of a 2nd
KITCHEN and more BEDROOMS. Near a
DAYCARE and PARK; 5 minute drive to ICE
DISTRICT and NAIT; 15 minute walk to
GRANT MACEWAN and tons of SHOPPING.
Welcome to the QUIET LIFE in the HEART of
EDMONTON!

Built in 1950

Essential Information

| | |
|----------------|-----------|
| MLS® # | E4431260 |
| Price | \$375,000 |
| Bedrooms | 2 |
| Bathrooms | 2.00 |
| Full Baths | 2 |
| Square Footage | 940 |
| Acres | 0.00 |



| | |
|------------|------------------------|
| Year Built | 1950 |
| Type | Single Family |
| Sub-Type | Detached Single Family |
| Style | Bungalow |
| Status | Active |

Community Information

| | |
|-------------|------------------|
| Address | 11319 110 Avenue |
| Area | Edmonton |
| Subdivision | Queen Mary Park |
| City | Edmonton |
| County | ALBERTA |
| Province | AB |
| Postal Code | T5H 1J2 |

Amenities

| | |
|-----------|--------------------------------|
| Amenities | Off Street Parking, Greenhouse |
| Parking | Single Garage Detached |

Interior

| | |
|--------------|---|
| Appliances | Dryer, Freezer, Stove-Electric, Washer, Window Coverings, Refrigerators-Two |
| Heating | Forced Air-1, Natural Gas |
| Stories | 2 |
| Has Basement | Yes |
| Basement | Full, Finished |

Exterior

| | |
|-------------------|---|
| Exterior | Wood, Vinyl |
| Exterior Features | Fenced, Landscaped, Public Transportation, Schools, Shopping Nearby |
| Roof | Asphalt Shingles |
| Construction | Wood, Vinyl |
| Foundation | Concrete Perimeter |

Additional Information

| | |
|----------------|------------------|
| Date Listed | April 17th, 2025 |
| Days on Market | 2 |
| Zoning | Zone 08 |

DATA IS DEEMED RELIABLE BUT IS NOT GUARANTEED ACCURATE BY THE REALTORS® ASSOCIATION OF

EDMONTON. COPYRIGHT 2025 BY THE REALTORS® ASSOCIATION OF EDMONTON. ALL RIGHTS RESERVED.Trademarks are owned or controlled by the Canadian Real Estate Association (CREA) and identify real estate professionals who are members of CREA (REALTOR®, REALTORS®) and/or the quality of services they provide (MLS®, Multiple Listing Service®)

Listing information last updated on April 19th, 2025 at 7:17am MDT