

\$499,500 - 516 Hudson Road, Edmonton

MLS® #E4430683

\$499,500

3 Bedroom, 3.50 Bathroom, 1,584 sqft

Single Family on 0.00 Acres

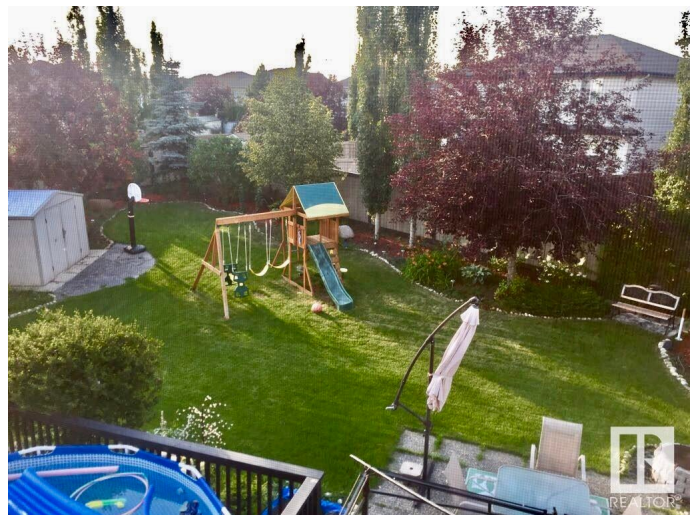
Hudson, Edmonton, AB

LARGE PIE LOT Home in Hudson Park - A Superb NW Edmonton Neighbourhood close to all Amenities & Schools for the Kids! This Family home / Investment Property features a 1,584 Sq.Ft Floor Plan with 3 Bedrooms & a Fully Finished Basement. This home is LOADED With Features which includes a Spacious main floor plan with a large dining area, gas fireplace & patio doors opening to a HUGE sun deck to the West Facing backyard. Upstairs has 3 Large Bedrooms, large laundry area & a nice sized Primary Bedroom ensuite. The basement has a 3rd full washroom & was finished for family nights & entertaining. Heated, Insulated double attached garage completes this wonderful home with Central A/C for those nearing warm Summer Days. The final touches to this home includes a 2023 New Hot Water Tank, NEW Shingles in 2024 located in a SUPER HIGHLY SOUGHT AFTER LOCATION! *** VERY RARE SIZED LOT ***

Built in 2003

Essential Information

MLS® #	E4430683
Price	\$499,500
Bedrooms	3
Bathrooms	3.50



Full Baths	3
Half Baths	1
Square Footage	1,584
Acres	0.00
Year Built	2003
Type	Single Family
Sub-Type	Detached Single Family
Style	2 Storey
Status	Active

Community Information

Address	516 Hudson Road
Area	Edmonton
Subdivision	Hudson
City	Edmonton
County	ALBERTA
Province	AB
Postal Code	T6V 1S7

Amenities

Amenities	Air Conditioner, Closet Organizers, Deck, Detectors Smoke, Patio, Vinyl Windows
Parking Spaces	4
Parking	Double Garage Attached, Heated, Insulated

Interior

Interior Features	ensuite bathroom
Appliances	Air Conditioning-Central, Dishwasher-Built-In, Dryer, Garage Control, Garage Opener, Hood Fan, Oven-Microwave, Storage Shed, Stove-Electric, Vacuum System Attachments, Washer, Window Coverings
Heating	Forced Air-1, Natural Gas
Fireplace	Yes
Fireplaces	Corner
Stories	3
Has Basement	Yes
Basement	Full, Finished

Exterior

Exterior	Wood, Vinyl
Exterior Features	Cul-De-Sac, Fenced, Playground Nearby, Public Transportation, Schools, Shopping Nearby, See Remarks
Roof	Asphalt Shingles
Construction	Wood, Vinyl
Foundation	Concrete Perimeter

School Information

Elementary Hilwie Hamdon School

Additional Information

Date Listed April 12th, 2025

Days on Market 9

Zoning Zone 27

DATA IS DEEMED RELIABLE BUT IS NOT GUARANTEED ACCURATE BY THE REALTORS® ASSOCIATION OF EDMONTON. COPYRIGHT 2025 BY THE REALTORS® ASSOCIATION OF EDMONTON. ALL RIGHTS RESERVED. Trademarks are owned or controlled by the Canadian Real Estate Association (CREA) and identify real estate professionals who are members of CREA (REALTOR®, REALTORS®) and/or the quality of services they provide (MLS®, Multiple Listing Service®)

Listing information last updated on April 21st, 2025 at 7:32am MDT