

\$1,650,000 - 44a Valleyview Crescent, Edmonton

MLS® #E4430098

\$1,650,000

4 Bedroom, 3.50 Bathroom, 2,350 sqft

Single Family on 0.00 Acres

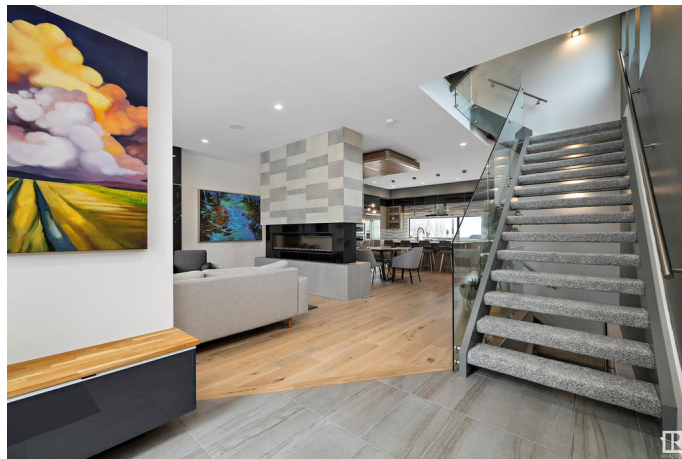
Parkview, Edmonton, AB

Experience modern luxury in the heart of Edmonton. Step into a masterpiece of contemporary design with this stunning in-fill home. Nestled in a mature and much sought after neighbourhood, this home offers the perfect blend of elegance, functionality and location. Boasting soaring ceilings, expansive windows and a layout that maximizes natural light. The gourmet kitchen features quartz countertops, a spacious island and top of the line Jen-Air stainless steel appliances. The primary bedroom includes a spa-like ensuite and walk-in closet while additional bedrooms offer ample space and convenience. The fully finished basement is perfect for entertaining, with a trendy wine room, additional bedroom, bathroom and versatile family room. The roof top patio is the perfect retreat with sweeping views of the river valley while the rear raised deck is an entertainment hub for family and friend get togethers.

Built in 2018

Essential Information

MLS® #	E4430098
Price	\$1,650,000
Bedrooms	4
Bathrooms	3.50
Full Baths	3



Half Baths	1
Square Footage	2,350
Acres	0.00
Year Built	2018
Type	Single Family
Sub-Type	Detached Single Family
Style	2 Storey
Status	Active

Community Information

Address	44a Valleyview Crescent
Area	Edmonton
Subdivision	Parkview
City	Edmonton
County	ALBERTA
Province	AB
Postal Code	T5R 5S4

Amenities

Amenities	Ceiling 10 ft., Deck, Rooftop Deck/Patio
Parking Spaces	2
Parking	Double Garage Detached

Interior

Interior Features	ensuite bathroom
Appliances	Air Conditioning-Central, Alarm/Security System, Dishwasher-Built-In, Dryer, Garage Control, Garage Opener, Hood Fan, Oven-Built-In, Oven-Microwave, Refrigerator, Stove-Countertop Gas, Vacuum System Attachments, Washer, Wine/Beverage Cooler
Heating	Forced Air-1, In Floor Heat System, Natural Gas
Fireplace	Yes
Fireplaces	Double Sided, Remote Control, Stone Facing
Stories	3
Has Basement	Yes
Basement	Full, Finished

Exterior

Exterior	Wood, Stucco
Exterior Features	Back Lane, Fenced, Ravine View, Schools

Roof	Asphalt Shingles
Construction	Wood, Stucco
Foundation	Concrete Perimeter

Additional Information

Date Listed	April 9th, 2025
Days on Market	11
Zoning	Zone 10



DATA IS DEEMED RELIABLE BUT IS NOT GUARANTEED ACCURATE BY THE REALTORS® ASSOCIATION OF EDMONTON. COPYRIGHT 2025 BY THE REALTORS® ASSOCIATION OF EDMONTON. ALL RIGHTS RESERVED.Trademarks are owned or controlled by the Canadian Real Estate Association (CREA) and identify real estate professionals who are members of CREA (REALTOR®, REALTORS®) and/or the quality of services they provide (MLS®, Multiple Listing Service®)

Listing information last updated on April 20th, 2025 at 9:31am MDT