

## \$357,000 - 122 2905 141 Street, Edmonton

MLS® #E4430060

**\$357,000**

3 Bedroom, 2.50 Bathroom, 1,219 sqft

Condo / Townhouse on 0.00 Acres

Chappelle Area, Edmonton, AB

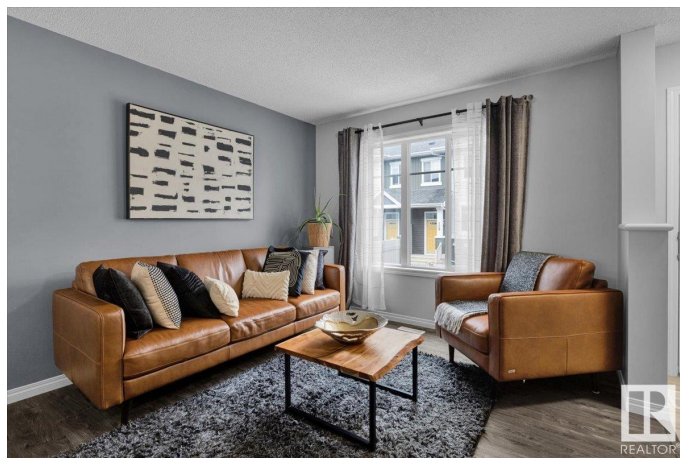
Step into homeownership with this bright and welcoming 3B+2.5BA townhouse in the vibrant community of Chappelle. The open concept main floor is perfect for keeping an eye on the kids while cooking and large enough for entertaining. Featuring quartz countertops, stainless steel appliances, a cozy electric fireplace and large windows that flood the space with natural light. Upstairs the primary suite includes a spacious walk-in closet and 3-piece ensuite. 2 additional bedrooms share a large 4-piece bathroom. Downstairs the double attached garage adds everyday convenience and opens to a large boot room+laundry. Outside, enjoy your own fenced yard—ideal for little ones, pets, bbq dinners and soaking up the sun. Chappelle perks: exclusive access to a private residents centre, skating rink, splash park, playgrounds, and year-round family events. Steps from walking trails, community gardens, ponds and a golf course. Schools, grocery stores, restaurants and public transit are also conveniently close to home

Built in 2017

### Essential Information

MLS® # E4430060

Price \$357,000



Bedrooms	3
Bathrooms	2.50
Full Baths	2
Half Baths	1
Square Footage	1,219
Acres	0.00
Year Built	2017
Type	Condo / Townhouse
Sub-Type	Townhouse
Style	2 Storey
Status	Active

### Community Information

Address	122 2905 141 Street
Area	Edmonton
Subdivision	Chappelle Area
City	Edmonton
County	ALBERTA
Province	AB
Postal Code	T6M 3M4

### Amenities

Amenities	See Remarks
Parking Spaces	2
Parking	Double Garage Attached, Insulated

### Interior

Interior Features	ensuite bathroom
Appliances	Dishwasher-Built-In, Dryer, Microwave Hood Fan, Refrigerator, Stove-Electric, Washer, Window Coverings
Heating	Forced Air-1, Natural Gas
Fireplace	Yes
Fireplaces	Mantel
Stories	2
Has Basement	Yes
Basement	Full, Partially Finished

### Exterior

Exterior	Wood, Vinyl
----------	-------------

Exterior Features	Airport Nearby, Golf Nearby, Low Maintenance Landscape, Playground Nearby, See Remarks
Roof	Asphalt Shingles
Construction	Wood, Vinyl
Foundation	Concrete Perimeter

**Additional Information**

Date Listed	April 10th, 2025
Days on Market	11
Zoning	Zone 55
HOA Fees	439.61
HOA Fees Freq.	Annually
Condo Fee	\$234

DATA IS DEEMED RELIABLE BUT IS NOT GUARANTEED ACCURATE BY THE REALTORS® ASSOCIATION OF EDMONTON. COPYRIGHT 2025 BY THE REALTORS® ASSOCIATION OF EDMONTON. ALL RIGHTS RESERVED.Trademarks are owned or controlled by the Canadian Real Estate Association (CREA) and identify real estate professionals who are members of CREA (REALTOR®, REALTORS®) and/or the quality of services they provide (MLS®, Multiple Listing Service®)

Listing information last updated on April 21st, 2025 at 7:47am MDT