

Courtesy Of Jeffrey LeHoux and Cindy M Dooley Of Exp Realty

## **\$84,900 - 105 10811 115 Street, Edmonton**

MLS® #E4429864

**\$84,900**

1 Bedroom, 1.00 Bathroom, 529 sqft  
Condo / Townhouse on 0.00 Acres

Queen Mary Park, Edmonton, AB

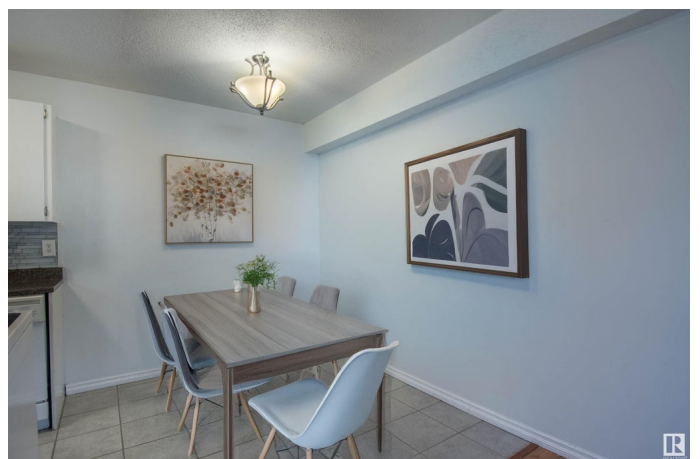
Welcome to your new sanctuary in the heart of Edmonton's vibrant Queen Mary Park community! This delightful condo offers an inviting blend of comfort and convenience, perfect for first-time buyers or savvy investors. Close to downtown, NAIT, bus route, and the revived Brewery District with tons of shopping and amenities. (new LRT coming soon) Bright, open-concept living space bathed in natural light from expansive east-facing windows. The kitchen shines with a newer stove and sleek modern faucet, refrigerator, and built-in dishwasher for all your culinary needs. The spacious bedroom features a generous closet and ample room for a king-size bed! Durable laminate and ceramic tile flooring extend throughout, combining style with easy maintenance. Updated lighting fixtures throughout the unit create a warm and welcoming ambiance. Conveniently common laundry is right outside your door. Quiet unit at the end of the hall in a well-managed, quiet complex. Low condo fees include water/sewer/heat.

Built in 1968

### **Essential Information**

MLS® # E4429864

Price \$84,900



|                |                        |
|----------------|------------------------|
| Bedrooms       | 1                      |
| Bathrooms      | 1.00                   |
| Full Baths     | 1                      |
| Square Footage | 529                    |
| Acres          | 0.00                   |
| Year Built     | 1968                   |
| Type           | Condo / Townhouse      |
| Sub-Type       | Lowrise Apartment      |
| Style          | Single Level Apartment |
| Status         | Active                 |

### **Community Information**

|             |                      |
|-------------|----------------------|
| Address     | 105 10811 115 Street |
| Area        | Edmonton             |
| Subdivision | Queen Mary Park      |
| City        | Edmonton             |
| County      | ALBERTA              |
| Province    | AB                   |
| Postal Code | T5L 5H5              |

### **Amenities**

|           |   |
|-----------|---|
| Amenities | Detectors Smoke, No Animal Home, No Smoking Home, Vinyl Windows |
| Parking   | Stall   |

### **Interior**

|              |  |
|--------------|--|
| Appliances   | Dishwasher-Built-In, Fan-Ceiling, Hood Fan, Refrigerator, Stove-Electric, Window Coverings |
| Heating      | Baseboard, Natural Gas   |
| # of Stories | 3  |
| Stories      | 1  |
| Has Basement | Yes  |
| Basement     | None, No Basement  |

### **Exterior**

|                   |  |
|-------------------|--|
| Exterior          | Wood, Brick  |
| Exterior Features | Back Lane, Corner Lot, Landscaped, Level Land, Playground Nearby, Public Transportation, Schools, Shopping Nearby, See Remarks, Partially Fenced |
| Roof              | Tar & Gravel   |

|              |                    |
|--------------|--------------------|
| Construction | Wood, Brick        |
| Foundation   | Concrete Perimeter |

### **Additional Information**

|                |                 |
|----------------|-----------------|
| Date Listed    | April 9th, 2025 |
| Days on Market | 10              |
| Zoning         | Zone 08         |
| Condo Fee      | \$343           |

DATA IS DEEMED RELIABLE BUT IS NOT GUARANTEED ACCURATE BY THE REALTORS® ASSOCIATION OF EDMONTON. COPYRIGHT 2025 BY THE REALTORS® ASSOCIATION OF EDMONTON. ALL RIGHTS RESERVED. Trademarks are owned or controlled by the Canadian Real Estate Association (CREA) and identify real estate professionals who are members of CREA (REALTOR®, REALTORS®) and/or the quality of services they provide (MLS®, Multiple Listing Service®)

Listing information last updated on April 19th, 2025 at 6:32am MDT