

## \$366,000 - 28 655 Tamarack Road, Edmonton

MLS® #E4429697

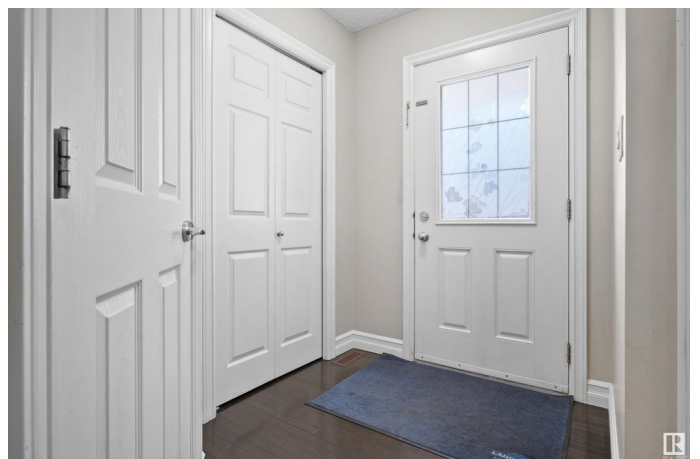
**\$366,000**

3 Bedroom, 3.00 Bathroom, 1,236 sqft

Condo / Townhouse on 0.00 Acres

Tamarack, Edmonton, AB

Welcome to this fantastic half duplex nestled in the highly sought-after community of Tamarack. Backing onto a TRAIL, there are no backing neighbours. This beautifully maintained home features a FINISHED BASEMENT with a BATHROOM, offering plenty of space for families of all sizes. The main floor welcomes you with a spacious front entry, leading into an open-concept kitchen with granite countertops and ample cabinet space. Right next to the kitchen is a dining area filled with lots of natural light. This flows seamlessly in a cozy living room, perfect for relaxing after a long day or hosting guests. Upstairs, you'll find three generously sized bedrooms, including a primary bedroom with a full ensuite. A second full bathroom serves the additional bedrooms, offering both comfort and functionality. This home is fully landscaped with a fence and a deck. Situated in a prime location, you're just steps from public transit, shopping, and Schools.



Built in 2013

### Essential Information

MLS® #	E4429697
Price	\$366,000
Bedrooms	3
Bathrooms	3.00

Full Baths	2
Half Baths	2
Square Footage	1,236
Acres	0.00
Year Built	2013
Type	Condo / Townhouse
Sub-Type	Half Duplex
Style	2 Storey
Status	Active

### Community Information

Address	28 655 Tamarack Road
Area	Edmonton
Subdivision	Tamarack
City	Edmonton
County	ALBERTA
Province	AB
Postal Code	T6T 0N4

### Amenities

Amenities	Deck, See Remarks
Parking	Single Garage Attached

### Interior

Interior Features	ensuite bathroom
Appliances	Dishwasher-Built-In, Dryer, Garage Control, Garage Opener, Microwave Hood Fan, Refrigerator, Stove-Electric, Washer
Heating	Forced Air-1, Natural Gas
Stories	3
Has Basement	Yes
Basement	Full, Finished

### Exterior

Exterior	Wood, Vinyl
Exterior Features	Fenced, Landscaped, Playground Nearby, Public Transportation, Schools, Shopping Nearby
Roof	Asphalt Shingles
Construction	Wood, Vinyl
Foundation	Concrete Perimeter

**Additional Information**

Date Listed	April 8th, 2025
Days on Market	13
Zoning	Zone 30
Condo Fee	\$273

DATA IS DEEMED RELIABLE BUT IS NOT GUARANTEED ACCURATE BY THE REALTORS® ASSOCIATION OF EDMONTON. COPYRIGHT 2025 BY THE REALTORS® ASSOCIATION OF EDMONTON. ALL RIGHTS RESERVED.Trademarks are owned or controlled by the Canadian Real Estate Association (CREA) and identify real estate professionals who are members of CREA (REALTOR®, REALTORS®) and/or the quality of services they provide (MLS®, Multiple Listing Service®)

Listing information last updated on April 21st, 2025 at 10:47am MDT