

\$395,000 - 11620 11 Avenue, Edmonton

MLS® #E4429457

\$395,000

3 Bedroom, 3.50 Bathroom, 1,330 sqft
Condo / Townhouse on 0.00 Acres

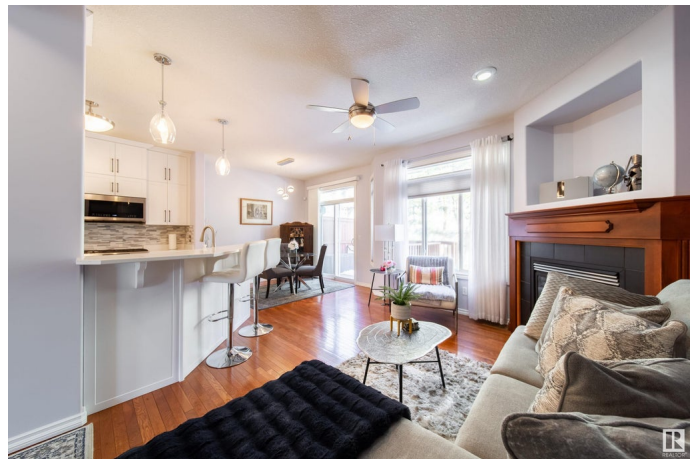
Rutherford (Edmonton), Edmonton, AB

Fantastic half duplex townhouse located on a quiet street in Rutherford. Over 1300 sq ft, 3 bedrooms, 4 bathrooms, fully finished basement and single attached garage. Spacious front entryway leading to an open layout kitchen/living/dining area. Updated kitchen with refaced cabinets right to the ceiling, quartz countertops, tiled backsplash and newer stainless steel kitchen appliances. Hardwood floors and light paint color throughout the main floor and living room centred around a corner gas fireplace. Upstairs features 3 large bedrooms, including a walk in ensuite closet and both a full 4 piece bathroom and large 3 piece ensuite bathroom. All 4 bathroom vanities in the house have been updated. Basement is fully finished with a large living space, 4 piece bathroom and storage space. Low condo fees, great location and move-in ready!

Built in 2006

Essential Information

MLS® #	E4429457
Price	\$395,000
Bedrooms	3
Bathrooms	3.50
Full Baths	3
Half Baths	1



Square Footage	1,330
Acres	0.00
Year Built	2006
Type	Condo / Townhouse
Sub-Type	Half Duplex
Style	2 Storey
Status	Active

Community Information

Address	11620 11 Avenue
Area	Edmonton
Subdivision	Rutherford (Edmonton)
City	Edmonton
County	ALBERTA
Province	AB
Postal Code	T6W 1W8

Amenities

Amenities	See Remarks
Parking	Single Garage Attached

Interior

Interior Features	ensuite bathroom
Appliances	Dishwasher-Built-In, Dryer, Microwave Hood Fan, Refrigerator, Stove-Gas, Vacuum Systems, Washer, Window Coverings
Heating	Forced Air-1, Natural Gas
Fireplace	Yes
Fireplaces	Corner
Stories	3
Has Basement	Yes
Basement	Full, Finished

Exterior

Exterior	Wood, Vinyl
Exterior Features	Airport Nearby, Flat Site, Golf Nearby, Playground Nearby, Public Transportation, Schools, Shopping Nearby
Roof	Asphalt Shingles
Construction	Wood, Vinyl
Foundation	Concrete Perimeter

Additional Information

Date Listed	April 6th, 2025
Days on Market	11
Zoning	Zone 55
Condo Fee	\$280

DATA IS DEEMED RELIABLE BUT IS NOT GUARANTEED ACCURATE BY THE REALTORS® ASSOCIATION OF EDMONTON. COPYRIGHT 2025 BY THE REALTORS® ASSOCIATION OF EDMONTON. ALL RIGHTS RESERVED. Trademarks are owned or controlled by the Canadian Real Estate Association (CREA) and identify real estate professionals who are members of CREA (REALTOR®, REALTORS®) and/or the quality of services they provide (MLS®, Multiple Listing Service®)

Listing information last updated on April 17th, 2025 at 9:17pm MDT