

# \$548,500 - 9833 68 Avenue, Edmonton

MLS® #E4429279

## \$548,500

5 Bedroom, 2.00 Bathroom, 1,206 sqft  
Single Family on 0.00 Acres

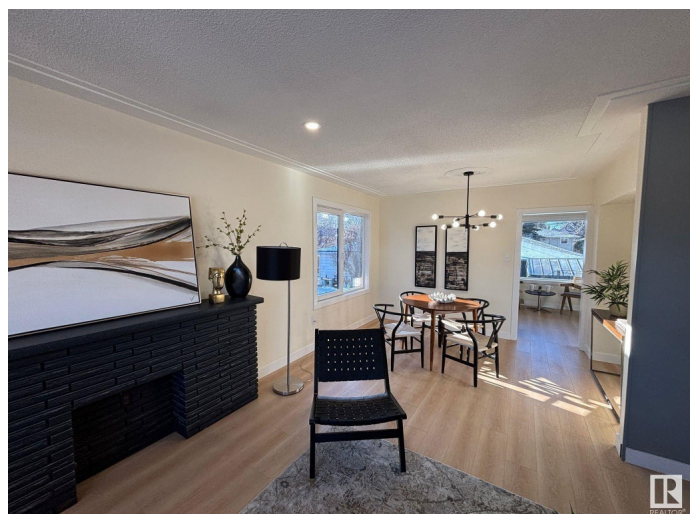
Hazeldean, Edmonton, AB

STEPS FROM MILL CREEK RAVINE and HAPPY BEER STREET—your new lifestyle starts HERE. Hike, bike, or stroll the RAVINE TRAILS, grab a pint at local breweries, or sip a latte at one of the nearby caf  s. Hazeldean is a hidden gem with a strong COMMUNITY LEAGUE, parks, playgrounds, and quick access to Whyte Ave. This RENOVATED 5-BED, 2-BATH home has a SEPARATE ENTRANCE to a bright in-law suite. Inside: OPEN-CONCEPT layout, custom cabinets, QUARTZ, pot lights, and new German tilt & turn windows. Massive primary, DOUBLE GARAGE, fenced yard, and upgraded landscaping. Live where the good vibes are.

Built in 1956

### Essential Information

MLS® #	E4429279
Price	\$548,500
Bedrooms	5
Bathrooms	2.00
Full Baths	2
Square Footage	1,206
Acres	0.00
Year Built	1956
Type	Single Family
Sub-Type	Detached Single Family



Style                      Raised Bungalow  
Status                     Active

### **Community Information**

Address                  9833 68 Avenue  
Area                        Edmonton  
Subdivision              Hazeldean  
City                        Edmonton  
County                    ALBERTA  
Province                 AB  
Postal Code              T6E 0R4

### **Amenities**

Amenities                See Remarks  
Parking Spaces        4  
Parking                  Double Garage Detached

### **Interior**

Appliances              Dryer, Garage Opener, Hood Fan, Washer, Refrigerators-Two,  
Stoves-Two  
Heating                  Forced Air-1, Natural Gas  
Stories                    2  
Has Basement            Yes  
Basement                Full, Finished

### **Exterior**

Exterior                 Wood, Stucco  
Exterior Features      Back Lane, Fenced, Playground Nearby, Schools, Shopping Nearby,  
See Remarks  
Roof                        Asphalt Shingles  
Construction            Wood, Stucco  
Foundation              Concrete Perimeter

### **Additional Information**

Date Listed              April 5th, 2025  
Days on Market        16  
Zoning                    Zone 17

DATA IS DEEMED RELIABLE BUT IS NOT GUARANTEED ACCURATE BY THE REALTORS® ASSOCIATION OF EDMONTON. COPYRIGHT 2025 BY THE REALTORS® ASSOCIATION OF EDMONTON. ALL RIGHTS RESERVED. Trademarks are owned or controlled by the Canadian Real Estate Association (CREA) and identify real

estate professionals who are members of CREA (REALTOR®®, REALTORS®®) and/or the quality of services they provide (MLS®®, Multiple Listing Service®®)

Listing information last updated on April 21st, 2025 at 6:17pm MDT