

\$379,900 - 7 1636 Kerr Road, Edmonton

MLS® #E4429241

\$379,900

3 Bedroom, 2.50 Bathroom, 1,359 sqft

Condo / Townhouse on 0.00 Acres

Griesbach, Edmonton, AB

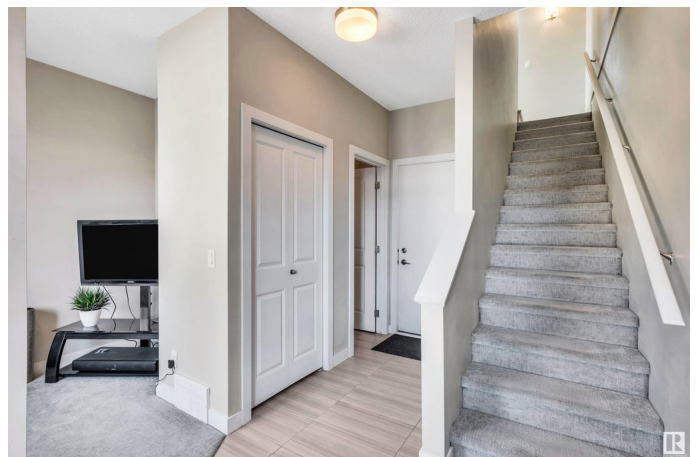
Immaculately kept end unit, fronts the park with vast green space, nestled in the community of Griesbach, pride of ownership throughout. This End unit, 3-storey home boasts spacious living across 1,359sqft, featuring 3 bedrooms & room for all. The main floor welcomes you w/ a bright flex room, a half bath & access to your drywalled single attached garage. Heading up the first set of stairs, you'll find an open-concept living space, where the kitchen, dinette and living room flow seamlessly; perfect for entertaining. Primary & 2 additional bedrooms on the upper level offers privacy & tranquility. Features include: S/S appliances, Quartz Countertops, Balcony with gas BBQ hook-up & Upstairs Laundry. Single car garage & titled stall as well as ample Visitor parking for friends/family! All this & minutes away from Schools, Griesbach Village, restaurants/bars, playgrounds, a toboggan hill & so much more. Experience urban living at its finest in this stylish modern home you can call your own, a must see today.

Built in 2016

Essential Information

MLS® # E4429241

Price \$379,900



Bedrooms	3
Bathrooms	2.50
Full Baths	2
Half Baths	1
Square Footage	1,359
Acres	0.00
Year Built	2016
Type	Condo / Townhouse
Sub-Type	Townhouse
Style	3 Storey
Status	Active

Community Information

Address	7 1636 Kerr Road
Area	Edmonton
Subdivision	Griesbach
City	Edmonton
County	ALBERTA
Province	AB
Postal Code	T5E 6W3

Amenities

Amenities	Off Street Parking, Air Conditioner, Deck, Detectors Smoke, No Animal Home, No Smoking Home, Parking-Extra, Parking-Visitor
Parking Spaces	2
Parking	Single Garage Attached, Stall

Interior

Interior Features	ensuite bathroom
Appliances	Air Conditioning-Central, Dishwasher-Built-In, Dryer, Garage Opener, Refrigerator, Stove-Electric, Washer, Window Coverings
Heating	Forced Air-1, Natural Gas
Stories	3
Has Basement	Yes
Basement	None, No Basement

Exterior

Exterior	Wood, Vinyl
Exterior Features	Backs Onto Park/Trees, Golf Nearby, Landscaped, Low Maintenance

Landscape, Picnic Area, Playground Nearby, Public Swimming Pool,
Public Transportation, Schools, Shopping Nearby

Roof	Asphalt Shingles
Construction	Wood, Vinyl
Foundation	Concrete Perimeter

Additional Information

Date Listed	April 4th, 2025
Days on Market	17
Zoning	Zone 27
Condo Fee	\$246

DATA IS DEEMED RELIABLE BUT IS NOT GUARANTEED ACCURATE BY THE REALTORS® ASSOCIATION OF EDMONTON. COPYRIGHT 2025 BY THE REALTORS® ASSOCIATION OF EDMONTON. ALL RIGHTS RESERVED. Trademarks are owned or controlled by the Canadian Real Estate Association (CREA) and identify real estate professionals who are members of CREA (REALTOR®, REALTORS®) and/or the quality of services they provide (MLS®, Multiple Listing Service®)

Listing information last updated on April 21st, 2025 at 6:32pm MDT