

Courtesy Of Edward A Greiner Of Liv Real Estate

\$165,000 - 106 14708 50 Street, Edmonton

MLS® #E4427556

\$165,000

2 Bedroom, 2.00 Bathroom, 853 sqft
Condo / Townhouse on 0.00 Acres

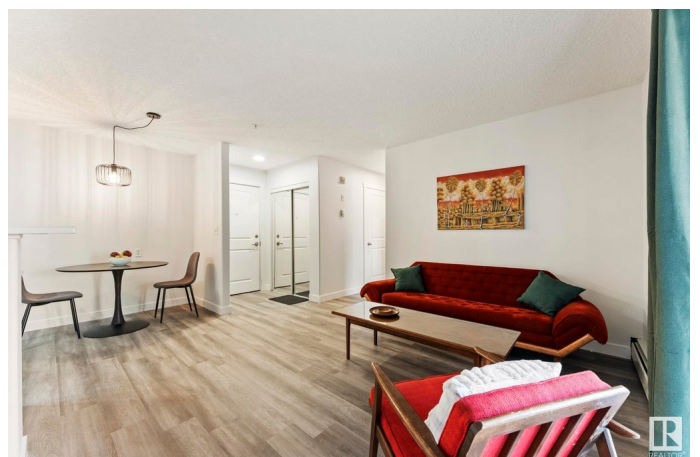
Casselman, Edmonton, AB

Welcome to convenient living in this 2 bedroom 2 bath condo with in suite laundry. Brand new kitchen appliances! Freshly painted with new flooring throughout this main floor unit also has a large private patio space, a HUGE primary bedroom, with walk-in closet and an open concept kitchen living space. Location, location, location advantageously connected to major roadways and public transit. Be almost anywhere in the city in 20 minutes including, Downtown, St. Albert, Sherwood Park and Fort Saskatchewan. All the big box stores are here too! Pet friendly building, surrounded by green parks and walking paths.

Built in 2004

Essential Information

| | |
|----------------|-------------------|
| MLS® # | E4427556 |
| Price | \$165,000 |
| Bedrooms | 2 |
| Bathrooms | 2.00 |
| Full Baths | 2 |
| Square Footage | 853 |
| Acres | 0.00 |
| Year Built | 2004 |
| Type | Condo / Townhouse |
| Sub-Type | Lowrise Apartment |



| | |
|--------|------------------------|
| Style | Single Level Apartment |
| Status | Active |

Community Information

| | |
|-------------|---------------------|
| Address | 106 14708 50 Street |
| Area | Edmonton |
| Subdivision | Casselman |
| City | Edmonton |
| County | ALBERTA |
| Province | AB |
| Postal Code | T5A 5G9 |

Amenities

| | |
|-----------|---|
| Amenities | Detectors Smoke, No Smoking Home, Parking-Plug-Ins, Parking-Visitor, Patio, Sprinkler System-Fire |
| Parking | Stall |

Interior

| | |
|-------------------|---|
| Interior Features | ensuite bathroom |
| Appliances | Dishwasher-Built-In, Hood Fan, Refrigerator, Stacked Washer/Dryer, Stove-Electric |
| Heating | Baseboard, Natural Gas |
| # of Stories | 4 |
| Stories | 1 |
| Has Basement | Yes |
| Basement | None, No Basement |

Exterior

| | |
|-------------------|-----------------------|
| Exterior | Wood, Stucco |
| Exterior Features | Backs Onto Park/Trees |
| Roof | Asphalt Shingles |
| Construction | Wood, Stucco |
| Foundation | Slab |

Additional Information

| | |
|----------------|------------------|
| Date Listed | March 26th, 2025 |
| Days on Market | 27 |
| Zoning | Zone 02 |
| Condo Fee | \$531 |

DATA IS DEEMED RELIABLE BUT IS NOT GUARANTEED ACCURATE BY THE REALTORS® ASSOCIATION OF EDMONTON. COPYRIGHT 2025 BY THE REALTORS® ASSOCIATION OF EDMONTON. ALL RIGHTS RESERVED. Trademarks are owned or controlled by the Canadian Real Estate Association (CREA) and identify real estate professionals who are members of CREA (REALTOR®, REALTORS®) and/or the quality of services they provide (MLS®, Multiple Listing Service®)

Listing information last updated on April 21st, 2025 at 9:31pm MDT