

# \$10,000,000 - 6425 34 Street, Edmonton

MLS® #E4424029

**\$10,000,000**

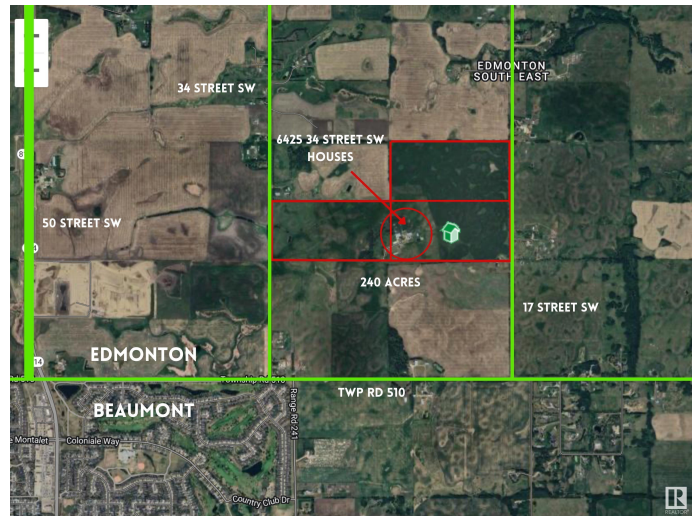
0 Bedroom, 0.00 Bathroom,  
Single Family on 240.00 Acres

Edmonton South East, Edmonton, AB

Unparalleled Development Opportunity in SE Edmonton Prime 240-acre Parcel in the SE!  
This property comprises 3 separate 80-acre titled properties, totalling approx 240 acres. The land stretches from 34 St East to 17 St, providing a vast canvas for investment. Enjoy the convenience of being mins away from a range of shopping centres & amenities, with easy access to 41 Ave, 50 St SW and Ellerslie Rd. The location grants effortless access to both Edmonton's South and the neighbouring town of Beaumont. Anthony Henday Dr just a short 5-minute drive away, easy access to the QEII, International Airport, HWY 14, and HWY 21. Property includes a 3000 sqft modern house (2020-built) with attached garage, a 1467 sqft. renovated bungalow with detached garage, 1 original barn (1900-built), 1 heated shop (40â€™<sup>TM</sup>x80â€™<sup>TM</sup>), 1 Quonset (50â€™<sup>TM</sup>x100), 2 barns (100â€™<sup>TM</sup>x40â€™<sup>TM</sup> & 70â€™<sup>TM</sup>x25â€™<sup>TM</sup>), and multiple outbuildings. Discover the untapped potential of this stunning pieces of land, perfectly situated in SE Edmonton for residential development.

## Essential Information

MLS® #	E4424029
Price	\$10,000,000
Bathrooms	0.00



Acres	240.00
Type	Single Family
Sub-Type	Vacant Lot/Land
Status	Active

### **Community Information**

Address	6425 34 Street
Area	Edmonton
Subdivision	Edmonton South East
City	Edmonton
County	ALBERTA
Province	AB
Postal Code	T6X 2R8

### **Exterior**

Exterior Features See Remarks

### **Additional Information**

Date Listed	March 5th, 2025
Days on Market	47
Zoning	Zone 33

DATA IS DEEMED RELIABLE BUT IS NOT GUARANTEED ACCURATE BY THE REALTORS® ASSOCIATION OF EDMONTON. COPYRIGHT 2025 BY THE REALTORS® ASSOCIATION OF EDMONTON. ALL RIGHTS RESERVED. Trademarks are owned or controlled by the Canadian Real Estate Association (CREA) and identify real estate professionals who are members of CREA (REALTOR®, REALTORS®) and/or the quality of services they provide (MLS®, Multiple Listing Service®)

Listing information last updated on April 21st, 2025 at 9:03pm MDT