

Courtesy Of James Han Of Initia Real Estate

## \$60,000 - N/A, Edmonton

MLS® #E4423006

**\$60,000**

0 Bedroom, 0.00 Bathroom,  
Business on 0.00 Acres

Spruce Avenue, Edmonton, AB

Cannabis store located on the main floor of a three storey building with residential on the upper floors. It is also located near to populated residential area. Note the rent as you donâ€™t pay for any utilities and this is the essential element to succeed in a small business. Please do not approach the employee direct.

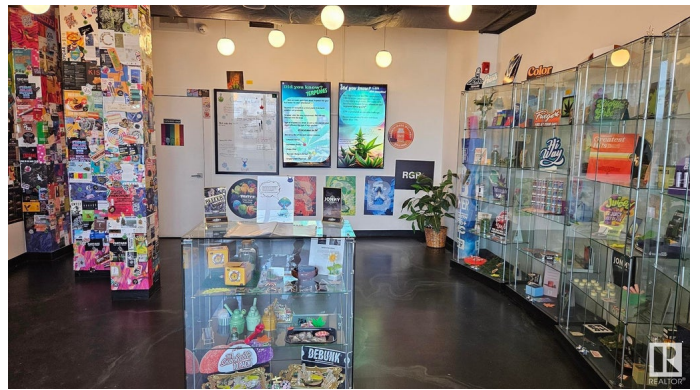
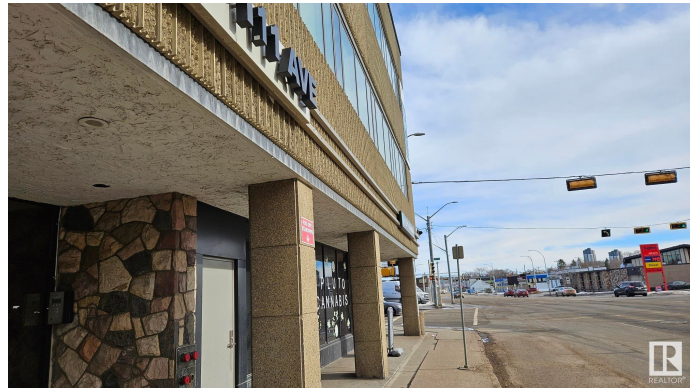
Built in 1969

### Essential Information

|            |          |
|------------|----------|
| MLS® #     | E4423006 |
| Price      | \$60,000 |
| Bathrooms  | 0.00     |
| Acres      | 0.00     |
| Year Built | 1969     |
| Type       | Business |
| Status     | Active   |

### Community Information

|             |               |
|-------------|---------------|
| Address     | N/A           |
| Area        | Edmonton      |
| Subdivision | Spruce Avenue |
| City        | Edmonton      |
| County      | ALBERTA       |
| Province    | AB            |
| Postal Code | T5G 0B3       |



## Additional Information

Date Listed February 26th, 2025

Days on Market 16

Zoning Zone 08

DATA IS DEEMED RELIABLE BUT IS NOT GUARANTEED ACCURATE BY THE REALTORS® ASSOCIATION OF EDMONTON. COPYRIGHT 2025 BY THE REALTORS® ASSOCIATION OF EDMONTON. ALL RIGHTS RESERVED. Trademarks are owned or controlled by the Canadian Real Estate Association (CREA) and identify real estate professionals who are members of CREA (REALTOR®, REALTORS®) and/or the quality of services they provide (MLS®, Multiple Listing Service®)

Listing information last updated on March 14th, 2025 at 8:47am MDT