

## \$749,000 - 12909 55 Street, Edmonton

MLS® #E4421576

**\$749,000**

0 Bedroom, 0.00 Bathroom,  
Land Commercial on 0.00 Acres

Kennedale Industrial, Edmonton, AB

INDUSTRIAL CORNER LOT in Kennedale.  
Excellent opportunity to build to suit or use as  
it is. LOT DIMENSIONS 131.9 sq. ft. x 123.1  
sq. ft. Currently had development permit  
approved for MINOR INDUSTRIAL USE.  
Great opportunity for development and or  
owner operator use.

### Essential Information

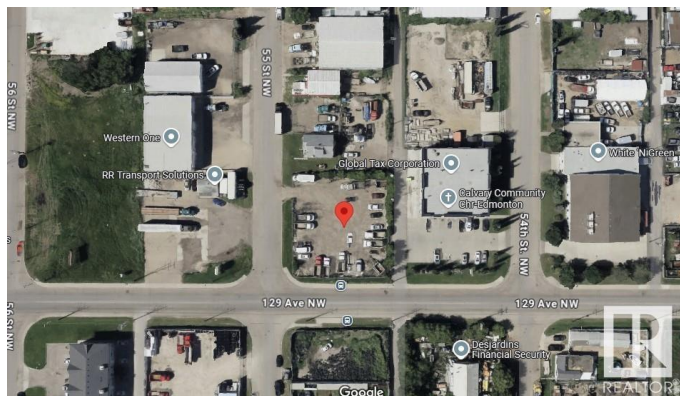
MLS® #	E4421576
Price	\$749,000
Bathrooms	0.00
Acres	0.00
Type	Land Commercial
Status	Active

### Community Information

Address	12909 55 Street
Area	Edmonton
Subdivision	Kennedale Industrial
City	Edmonton
County	ALBERTA
Province	AB
Postal Code	T5A 0C7

### Additional Information

Date Listed	February 14th, 2025
-------------	---------------------



Days on Market 62

Zoning Zone 06

DATA IS DEEMED RELIABLE BUT IS NOT GUARANTEED ACCURATE BY THE REALTORS® ASSOCIATION OF EDMONTON. COPYRIGHT 2025 BY THE REALTORS® ASSOCIATION OF EDMONTON. ALL RIGHTS RESERVED. Trademarks are owned or controlled by the Canadian Real Estate Association (CREA) and identify real estate professionals who are members of CREA (REALTOR®, REALTORS®) and/or the quality of services they provide (MLS®, Multiple Listing Service®)

Listing information last updated on April 17th, 2025 at 9:47am MDT