

Courtesy Of Diane L Thomas Of RE/MAX Excellence

# \$849,000 - 10503 135 Street, Edmonton

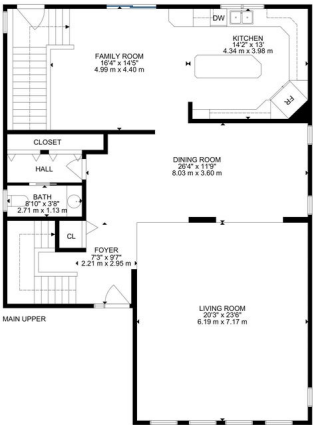
MLS® #E4417135

**\$849,000**

3 Bedroom, 3.50 Bathroom, 2,939 sqft  
Single Family on 0.00 Acres

Glenora, Edmonton, AB

This charming home is perfect for both entertaining and family living, with plenty of great features throughout. \*a VAULTED ceiling in the living room with cathedral like windows \*HARDWOOD floors throughout most of the main floor \*white kitchen with a large ISLAND, family room area and patio doors leading out to 2-tiered DECK \*a downstairs REC room with a wet bar, large windows, underfloor heating, a spacious bathroom, tons of STORAGE and access to the garage, with a HEATED DRIVEWAY! \* Upstairs, you'll find generously sized bedrooms, large bathrooms, and a roomy laundry area. With 3,960 square feet of living space on a 6,994-square-foot lot, this home offers plenty of space for everyone. Located in the vibrant GLENORA neighbourhood, 3 schools close by, tennis, pickleball, basketball and a new RINK at the community league just a block away. This is a great place to live and raise a familyâ€'donâ€™t miss this opportunity!



Built in 1949

## Essential Information

|           |           |
|-----------|-----------|
| MLS® #    | E4417135  |
| Price     | \$849,000 |
| Bedrooms  | 3         |
| Bathrooms | 3.50      |

|                |                        |
|----------------|------------------------|
| Full Baths     | 3                      |
| Half Baths     | 1                      |
| Square Footage | 2,939                  |
| Acres          | 0.00                   |
| Year Built     | 1949                   |
| Type           | Single Family          |
| Sub-Type       | Detached Single Family |
| Style          | 2 Storey               |
| Status         | Active                 |

### Community Information

|             |                  |
|-------------|------------------|
| Address     | 10503 135 Street |
| Area        | Edmonton         |
| Subdivision | Glenora          |
| City        | Edmonton         |
| County      | ALBERTA          |
| Province    | AB               |
| Postal Code | T5N 2C8          |

### Amenities

|           |                                    |
|-----------|------------------------------------|
| Amenities | Deck, Front Porch, Vaulted Ceiling |
| Parking   | Double Garage Attached             |

### Interior

|                   |   |
|-------------------|---|
| Interior Features | ensuite bathroom  |
| Appliances        | Dishwasher-Built-In, Dryer, Garage Control, Garage Opener, Refrigerator, Stove-Electric, Washer, Window Coverings |
| Heating           | Forced Air-1, Hot Water, Natural Gas  |
| Fireplace         | Yes   |
| Fireplaces        | Mantel  |
| Stories           | 3   |
| Has Basement      | Yes   |
| Basement          | Full, Finished  |

### Exterior

|                   |   |
|-------------------|---|
| Exterior          | Wood, Vinyl   |
| Exterior Features | Corner Lot, Fenced, Paved Lane, Playground Nearby, Public Transportation, Schools |
| Roof              | Asphalt Shingles  |

|              |                    |
|--------------|--------------------|
| Construction | Wood, Vinyl        |
| Foundation   | Concrete Perimeter |

**School Information**

|            |                     |
|------------|---------------------|
| Elementary | Glenora, St Vincent |
| Middle     | Westminster         |
| High       | Ross Shep, Mac      |

**Additional Information**

|                |                   |
|----------------|-------------------|
| Date Listed    | January 6th, 2025 |
| Days on Market | 105               |
| Zoning         | Zone 11           |

DATA IS DEEMED RELIABLE BUT IS NOT GUARANTEED ACCURATE BY THE REALTORS® ASSOCIATION OF EDMONTON. COPYRIGHT 2025 BY THE REALTORS® ASSOCIATION OF EDMONTON. ALL RIGHTS RESERVED.Trademarks are owned or controlled by the Canadian Real Estate Association (CREA) and identify real estate professionals who are members of CREA (REALTOR®, REALTORS®) and/or the quality of services they provide (MLS®, Multiple Listing Service®)

Listing information last updated on April 21st, 2025 at 7:47am MDT