

\$450,000 - 215 11520 100 Avenue, Edmonton

MLS® #E4414879

\$450,000

0 Bedroom, 0.00 Bathroom,
Office on 0.00 Acres

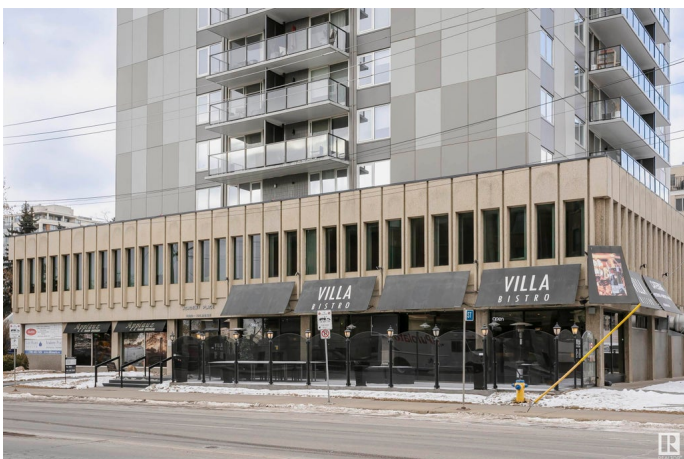
WÃ@hkwÃªntÃ´win, Edmonton, AB

Exceptional commercial space in the heart of Downtown Edmonton, currently utilized as a law office but suitable for any professional office needs. Located on the corner of 110 Ave & 116 St, across from the historic LeMarchand Mansion and Grant Notley Park, this mixed-use building offers prime visibility and convenience. The property features 7 large offices, a spacious boardroom, a fully equipped kitchen, a welcoming reception area, and a central space perfect for additional desks or modular workstations. All offices boast expansive windows, filling the space with natural light. The building also has its own parkade, ensuring ample parking for staff and clients. Residential units above the commercial space create a vibrant, mixed-use environment. Don't miss this rare opportunity to secure a beautifully designed office space in a prestigious downtown location.

Built in 1969

Essential Information

| | |
|------------|-----------|
| MLS® # | E4414879 |
| Price | \$450,000 |
| Bathrooms | 0.00 |
| Acres | 0.00 |
| Year Built | 1969 |
| Type | Office |



StatusActive

Community Information

Address215 11520 100 Avenue
AreaEdmonton
SubdivisionW&hkw&ntwin
CityEdmonton
CountyALBERTA
ProvinceAB
Postal CodeT5K 0J7

Exterior

ExteriorConcrete
ConstructionConcrete

Additional Information

Date ListedNovember 28th, 2024
Days on Market142
ZoningZone 12

DATA IS DEEMED RELIABLE BUT IS NOT GUARANTEED ACCURATE BY THE REALTORS® ASSOCIATION OF EDMONTON. COPYRIGHT 2025 BY THE REALTORS® ASSOCIATION OF EDMONTON. ALL RIGHTS RESERVED.Trademarks are owned or controlled by the Canadian Real Estate Association (CREA) and identify real estate professionals who are members of CREA (REALTOR®, REALTORS®) and/or the quality of services they provide (MLS®, Multiple Listing Service®)
Listing information last updated on April 19th, 2025 at 3:17am MDT