

Courtesy Of Jeff D Jackson Of Bode

# \$549,900 - 519 30 Avenue, Edmonton

MLS® #E4412846

**\$549,900**

4 Bedroom, 2.50 Bathroom, 1,626 sqft  
Single Family on 0.00 Acres

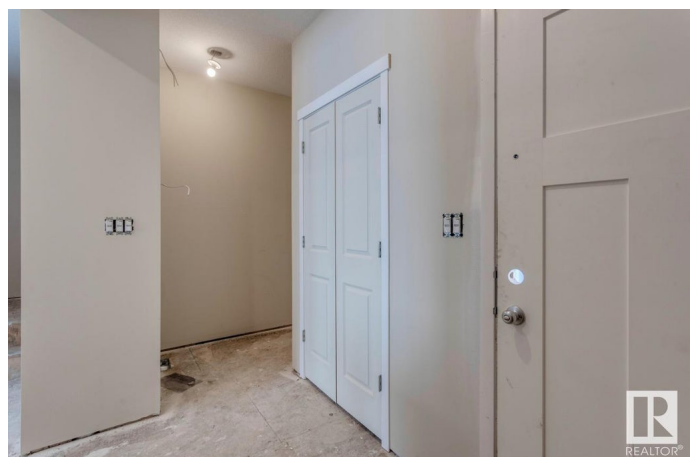
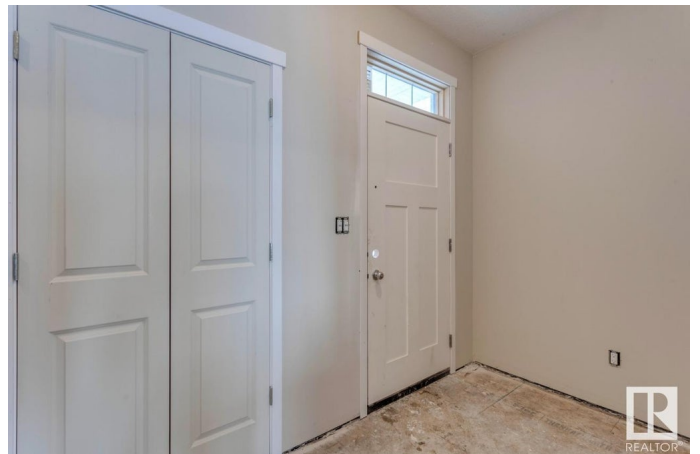
Maple Crest, Edmonton, AB

Welcome to the Michela 2 by Hopewell Residential, a stunning 4-bedroom, 2.5-bath, two-story home with a double attached garage and a spacious, south-facing backyard. This modern home features a 9' foundation height, an exterior gas line ready for future BBQs, and a secondary entrance for added convenience. The main floor showcases elegant spindle railing and an expansive kitchen with a large island, quartz countertops, and stainless steel appliances, perfect for cooking and entertaining. All 4 bedrooms are located upstairs, offering privacy and ample space for the entire family. Photos are representative.

Built in 2024

## Essential Information

|                |                        |
|----------------|------------------------|
| MLS® #         | E4412846               |
| Price          | \$549,900              |
| Bedrooms       | 4                      |
| Bathrooms      | 2.50                   |
| Full Baths     | 2                      |
| Half Baths     | 1                      |
| Square Footage | 1,626                  |
| Acres          | 0.00                   |
| Year Built     | 2024                   |
| Type           | Single Family          |
| Sub-Type       | Detached Single Family |



Style 2 Storey  
Status Active

### Community Information

Address 519 30 Avenue  
Area Edmonton  
Subdivision Maple Crest  
City Edmonton  
County ALBERTA  
Province AB  
Postal Code T5Y 6C4

### Amenities

Amenities Ceiling 9 ft., No Animal Home, No Smoking Home, See Remarks  
Parking Spaces 4  
Parking Double Garage Attached

### Interior

Interior Features ensuite bathroom  
Appliances Dishwasher-Built-In, Microwave Hood Fan, Refrigerator, Stove-Electric  
Heating Forced Air-1, Natural Gas  
Stories 2  
Has Basement Yes  
Basement Full, Unfinished

### Exterior

Exterior Wood, Stone, Vinyl  
Exterior Features Park/Reserve, Playground Nearby, Schools, Shopping Nearby  
Roof Asphalt Shingles  
Construction Wood, Stone, Vinyl  
Foundation Concrete Perimeter

### Additional Information

Date Listed November 6th, 2024  
Days on Market 127  
Zoning Zone 30

DATA IS DEEMED RELIABLE BUT IS NOT GUARANTEED ACCURATE BY THE REALTORS® ASSOCIATION OF EDMONTON. COPYRIGHT 2025 BY THE REALTORS® ASSOCIATION OF EDMONTON. ALL RIGHTS RESERVED. Trademarks are owned or controlled by the Canadian Real Estate Association (CREA) and identify real estate professionals who are members of CREA (REALTOR®, REALTORS®) and/or the quality of services they

provide (MLS® , Multiple Listing Service®)

Listing information last updated on March 13th, 2025 at 1:17pm MDT