

\$499,000 - 3301 10180 103 Street, Edmonton

MLS® #E4408002

\$499,000

2 Bedroom, 2.00 Bathroom, 868 sqft

Condo / Townhouse on 0.00 Acres

Downtown (Edmonton), Edmonton, AB

Welcome to Encore Tower – a sleek, all glass tower located steps from ICE DISTRICT! Encore TOWER'S BEST SELLING FLOOR PLAN! This 2 Bedroom 2 Full Bathroom B-WEST floorplan is the most efficient split-bedroom design and offers spacious open-concept living, 20 ft length west balcony, a large primary suite to comfortably fit queen sized bed, dual closets and private ensuite. Kitchen and bath details include 'modern-look' designer AYA cabinets throughout (soft-close), full-size Whirlpool stainless steel appliances, in-suite laundry and bright/tidy tub surrounds. New construction advantages include 9 ft ceilings*, durable laminate floors, sleek quartz surfaces, closet shelving, and individual temperature control. There's more, life at Encore includes many conveniences - friendly concierge, an inviting party-room, 4th floor sundeck with outdoor hot-tub and a private fitness room. Do not miss this opportunity at the city's ultimate central location and best new construction value!

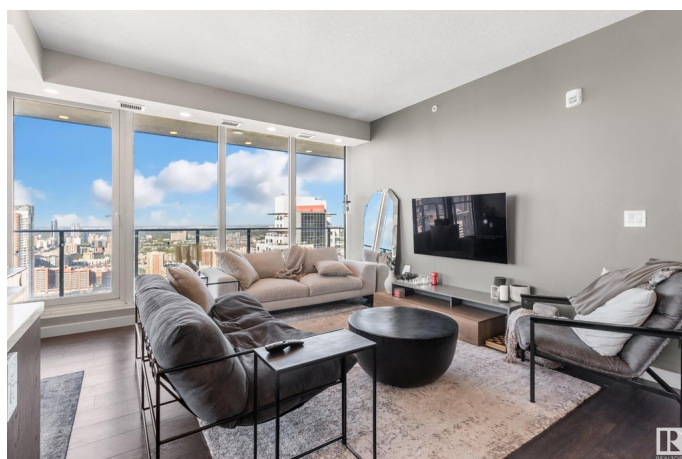
Built in 2020

Essential Information

MLS® # E4408002

Price \$499,000

Bedrooms 2



Bathrooms	2.00
Full Baths	2
Square Footage	868
Acres	0.00
Year Built	2020
Type	Condo / Townhouse
Sub-Type	Apartment High Rise
Style	Single Level Apartment
Status	Active

Community Information

Address	3301 10180 103 Street
Area	Edmonton
Subdivision	Downtown (Edmonton)
City	Edmonton
County	ALBERTA
Province	AB
Postal Code	T5J 0L1

Amenities

Amenities	Ceiling 9 ft., Exercise Room, Hot Tub, Party Room, Patio, Recreation Room/Centre, Secured Parking, Concierge Service
Parking Spaces	1
Parking	Underground

Interior

Interior Features	ensuite bathroom
Appliances	Air Conditioning-Central, Dishwasher-Built-In, Dryer, Garage Opener, Microwave Hood Fan, Refrigerator, Stove-Electric, Washer, Window Coverings
Heating	Heat Pump, Natural Gas
# of Stories	45
Stories	1
Has Basement	Yes
Basement	None, No Basement

Exterior

Exterior	Concrete, Brick, Metal
Exterior Features	Paved Lane, Public Swimming Pool, Public Transportation, Shopping

	Nearby, View City, View Downtown
Roof	EPDM Membrane
Construction	Concrete, Brick, Metal
Foundation	Concrete Perimeter

Additional Information

Date Listed	September 26th, 2024
Days on Market	206
Zoning	Zone 12
Condo Fee	\$694

DATA IS DEEMED RELIABLE BUT IS NOT GUARANTEED ACCURATE BY THE REALTORS® ASSOCIATION OF EDMONTON. COPYRIGHT 2025 BY THE REALTORS® ASSOCIATION OF EDMONTON. ALL RIGHTS RESERVED. Trademarks are owned or controlled by the Canadian Real Estate Association (CREA) and identify real estate professionals who are members of CREA (REALTOR®, REALTORS®) and/or the quality of services they provide (MLS®, Multiple Listing Service®)

Listing information last updated on April 20th, 2025 at 5:02pm MDT