

\$3,120,000 - Twp 555 R.rd 222, Rural Sturgeon County

MLS® #E4383273

\$3,120,000

0 Bedroom, 0.00 Bathroom,
Land Commercial on 0.00 Acres

None, Rural Sturgeon County, AB

80 Acres of cleared, flat and dry Heavy Industrial land in the Sturgeon Industrial Heartland. Part of a 320 acre offering immediately adjacent to the Cando Rail Terminal expansion. See MLS E4379793 (80 acres) and MLS E4379791 (160 acres). One mile east of Hwy 825.

Built in 2024

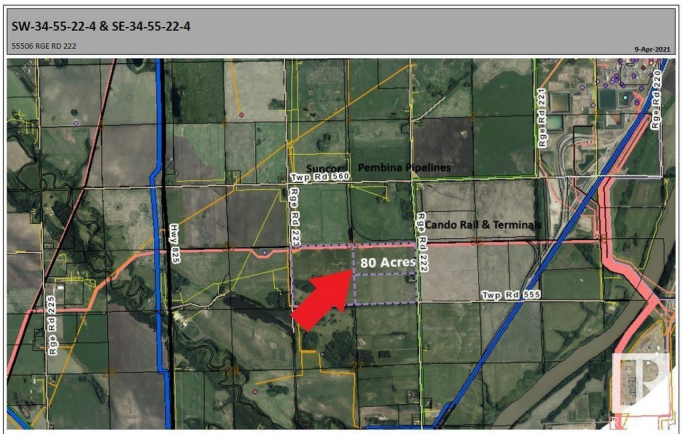
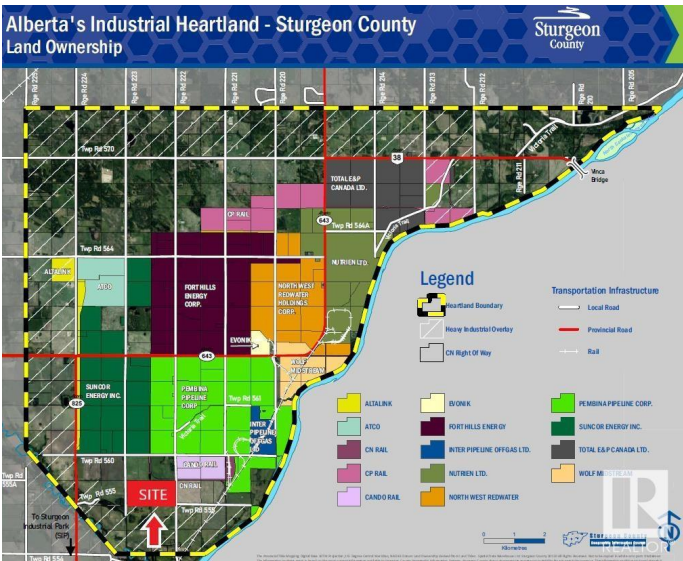
Essential Information

| | |
|------------|-----------------|
| MLS® # | E4383273 |
| Price | \$3,120,000 |
| Bathrooms | 0.00 |
| Acres | 0.00 |
| Year Built | 2024 |
| Type | Land Commercial |
| Status | Active |

Community Information

| | |
|-------------|-----------------------|
| Address | Twp 555 R.rd 222 |
| Area | Rural Sturgeon County |
| Subdivision | None |
| City | Rural Sturgeon County |
| County | ALBERTA |
| Province | AB |
| Postal Code | T0A 1N1 |

Exterior



| | |
|--------------|-------------|
| Exterior | See Remarks |
| Construction | See Remarks |

Additional Information

| | |
|----------------|------------------|
| Date Listed | April 22nd, 2024 |
| Days on Market | 361 |
| Zoning | Zone 60 |

DATA IS DEEMED RELIABLE BUT IS NOT GUARANTEED ACCURATE BY THE REALTORS® ASSOCIATION OF EDMONTON. COPYRIGHT 2025 BY THE REALTORS® ASSOCIATION OF EDMONTON. ALL RIGHTS RESERVED.Trademarks are owned or controlled by the Canadian Real Estate Association (CREA) and identify real estate professionals who are members of CREA (REALTOR®, REALTORS®) and/or the quality of services they provide (MLS®, Multiple Listing Service®)

Listing information last updated on April 18th, 2025 at 7:17pm MDT